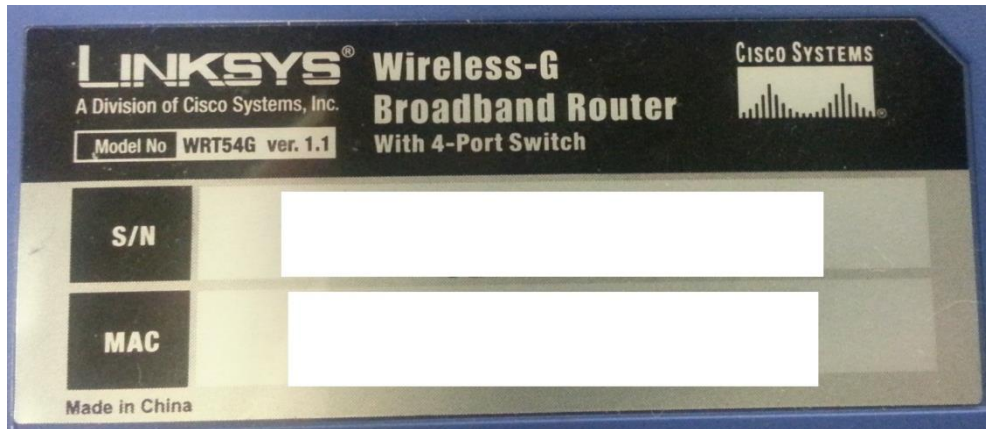




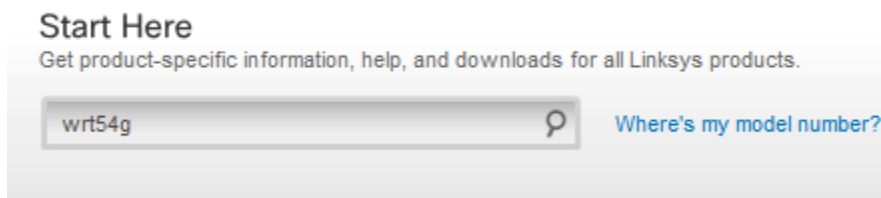
Learning About The . Net Linksys Router Firmware Upgrade

Guide for updating the firmware on most Linksys routers. The model used in this demo is a Linksys WRT54G v1.1 router. This process if done incorrectly may brick your router and render it unusable so perform this procedure at your own risk. We do not take any liability for a router being rendered unusable. Please contact the manufacturer if you have any questions about the procedure.

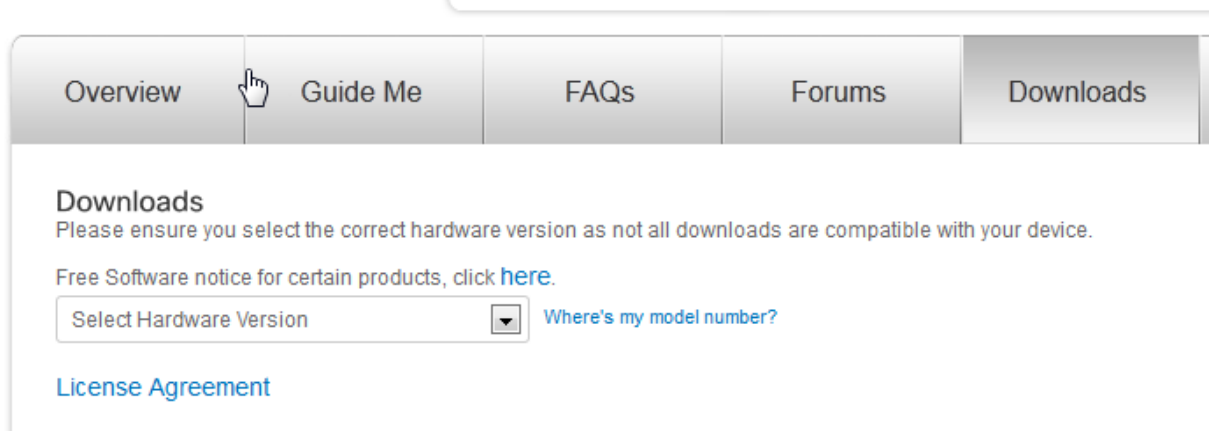
1. Identify the make, model, and version of the wireless router. Typically this information is located on the bottom of the device.



2. Go to manufacturer's website in this case (www.linksys.com) then click on support at the top of the page.
3. Enter the model number of the wireless router in the start here box and click on the magnifying glass to search their website.



4. Click on the downloads tab then select the appropriate hardware version for your router.





Learning About The . Net Linksys Router Firmware Upgrade

5. Click the download under the firmware section on the page.

[Firmware Upgrade Instructions](#)

[Download](#)

(Firmware Upgrade Instructions)

Firmware

02/24/2012

Ver.4.21.5

[Download](#) 3.20 MB

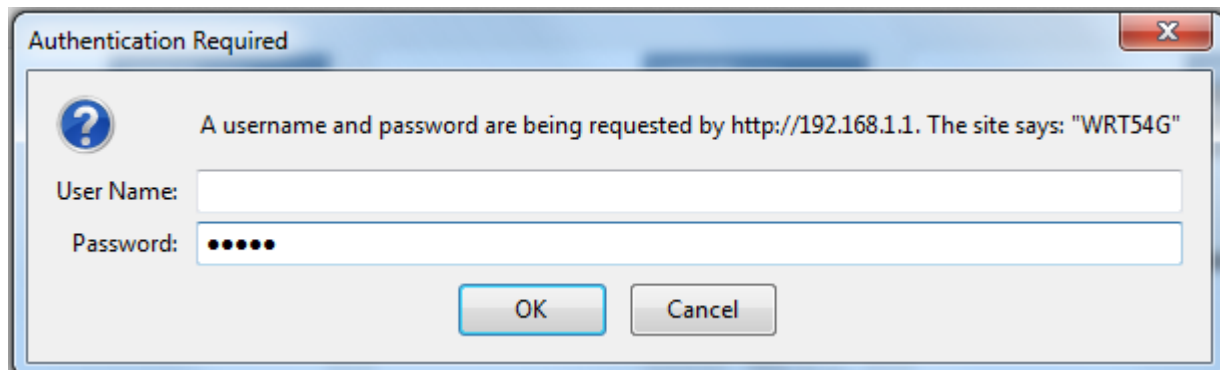
(Firmware)

[Release Notes](#)

6. Review the terms of service and if you agree to the terms click accept.
7. Save the file to your desktop or another folder you can easily locate.
8. Ensure you are plugged into the router via an Ethernet cable and that your wireless is disabled. Updating a router over a wireless connection can cause the router firmware to be corrupted and render your router useless.
9. In a web browser type in 192.168.1.1 to access the router configuration panel.

[192.168.1.1/](#)

10. If you haven't changed the default username and password the username will be left blank and the password will be "admin" without the quotes.





Learning About The . Net Linksys Router Firmware Upgrade

11. Click on the administration tab at the top of the screen then click firmware upgrade.

The screenshot shows the Linksys router administration interface. At the top, there is a navigation menu with tabs for Setup, Wireless, Security, Access Restrictions, Applications & Gaming, Administration, and Status. Below this, a sub-menu includes Management, Log, Diagnostics, Factory Defaults, Firmware Upgrade, and Config Management. The main content area is titled "Firmware Upgrade" and contains a text input field for selecting a file to upgrade, a "Browse..." button, and a warning message: "Warning: Upgrading firmware may take a few minutes, please don't turn off the power or press the reset button." Below the warning is another empty text input field and a red message: "Upgrade must NOT be interrupted!". At the bottom right, there is a large blue "Upgrade" button. On the right side of the page, there is a blue sidebar with instructions: "Click on the browse button to select the firmware file to be uploaded to the router." and "Click the Upgrade button to begin the upgrade process. Upgrade must not be interrupted. More...". The Cisco logo is visible in the bottom right corner.

12. Click browse and navigate to the location you downloaded the firmware to, select it, and then click open.

The screenshot shows a file selection dialog box. The "File name" field contains "FW_WRT54Gv4_4.21.5.000_20120220". The "Files of type" dropdown is set to "All Files". There are "Open" and "Cancel" buttons at the bottom.

13. Click upgrade and allow the process a couple of minutes to complete.

This screenshot is similar to the first one, but the file path "C:\Users\cyberdata\ba:" is entered into the text input field. The "Upgrade" button is highlighted in blue, indicating it is the next step to click.



Learning About The . Net Linksys Router Firmware Upgrade

14. While the upgrade is in progress you will see a screen showing the status. Do not interrupt this by using the computer while this process is running.

Firmware Upgrade

Please select a file to upgrade:

Warning: Upgrading firmware may take a few minutes, please don't turn off the power or press the reset button.

Upgrade must NOT be interrupted !

15. When the upgrade is complete you will see this message. Wait about 30 seconds before clicking continue.

Upgrade is successful.

16. Verify your router settings are still configured as they were before.